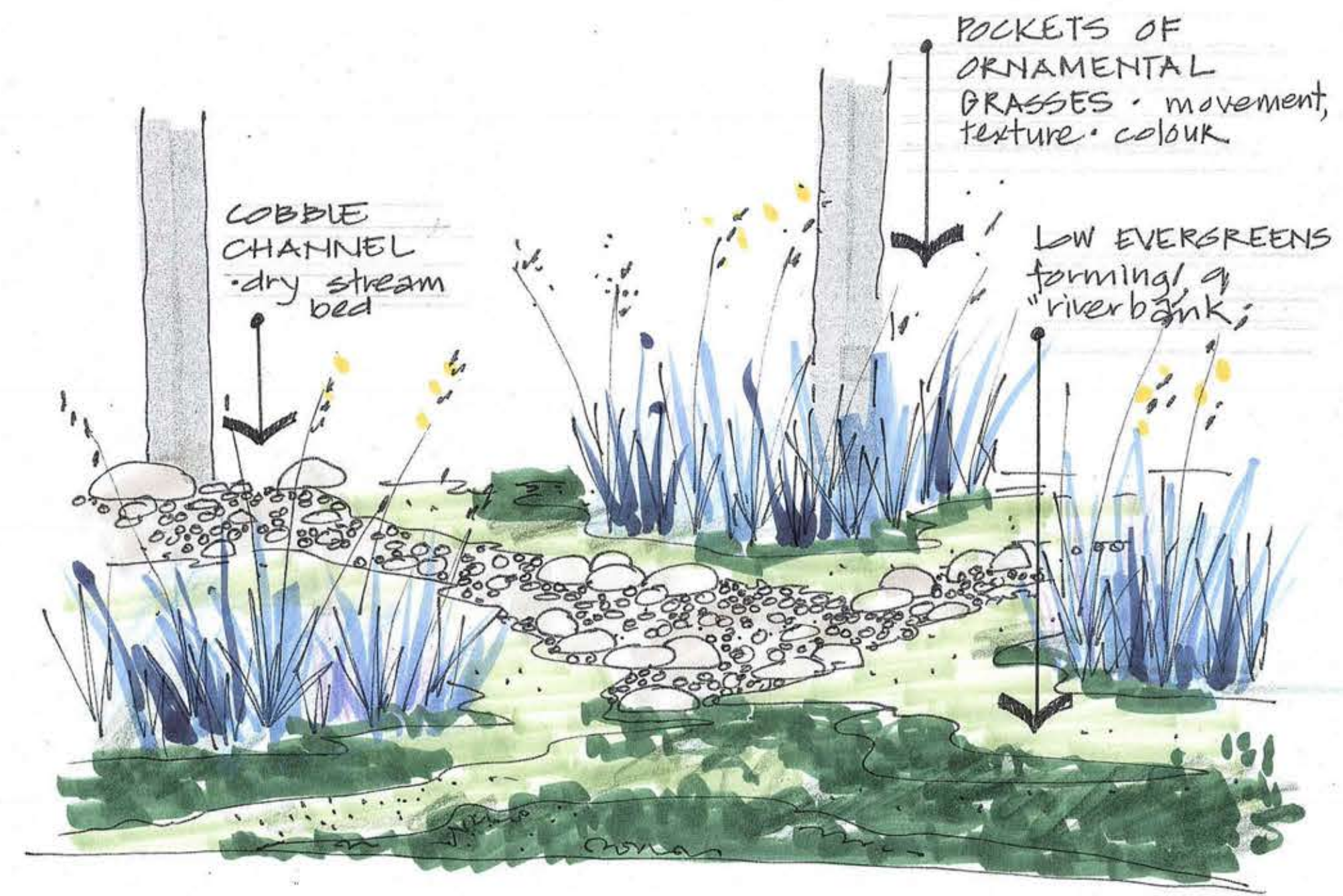


**GENERAL NOTES:**

1. Base plan information taken from
  - a. City of Nanaimo, As Built Drawing, March 29, 2006. Old City Infrastructure Grant Program Project 5: Milton Street. Drawing 15.
  - b. Site observations
2. Location of all existing utilities are to be verified prior to installation of landscape. 'Call First' Line at 1 800 474 6886.

**PLANTING NOTES:**

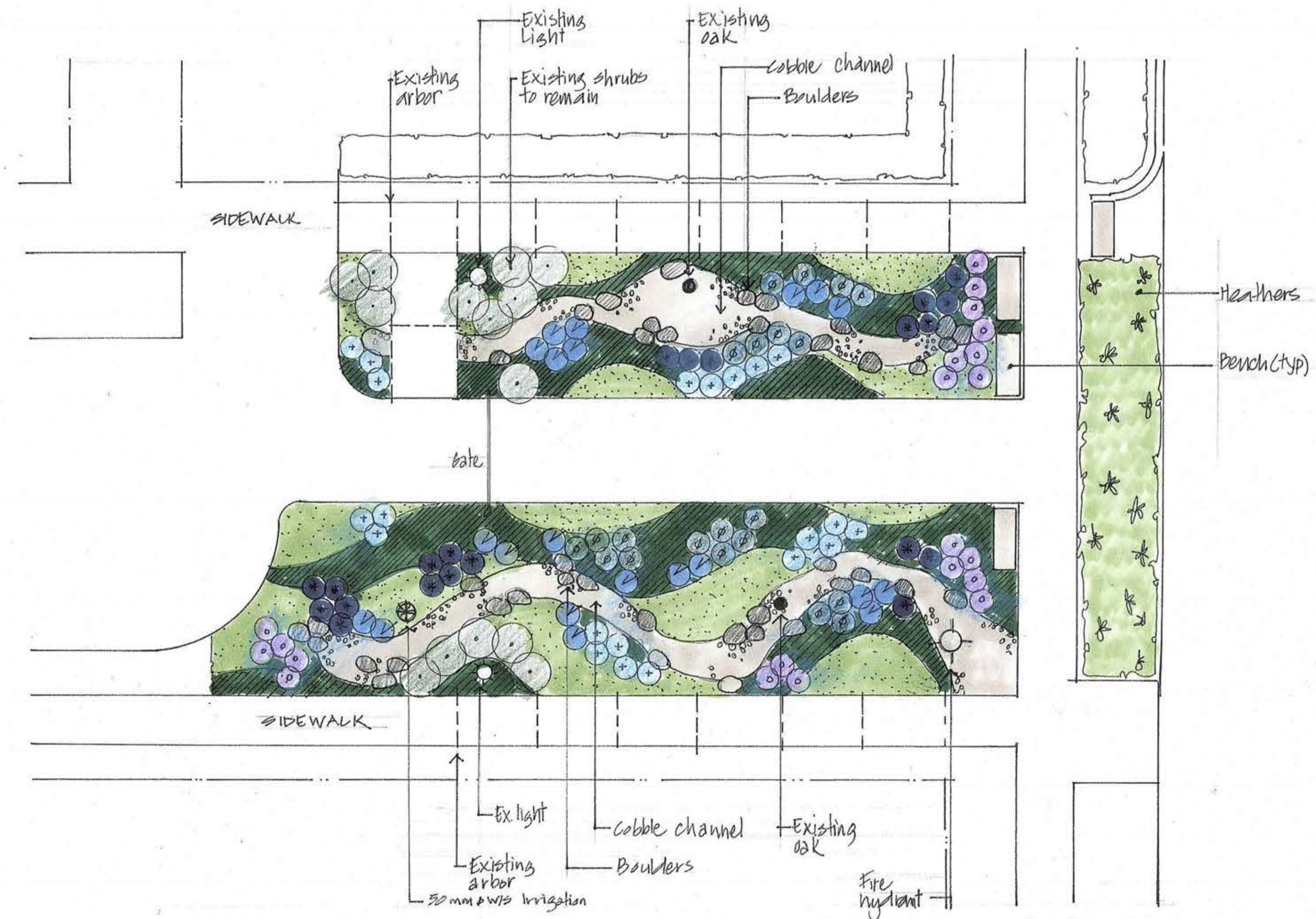
- 1 Heathers: Plant in groups of 5.
- 2 Thymes: Plant on the edges of the designated areas.
- 3 Cobble channel to be 2"-6" diameter stones.
- 4 Boulders to be 2' minimum in size, rounded shapes. Bury boulders by 1/3<sup>rd</sup>. NOCA to approve rocks before they are brought to the site.
- 5 All plants and planting to be to BC SLA/BCNTA Landscape Standards latest edition, and City of Nanaimo Landscape Standards.
- 6 Design may be adjusted to accommodate existing utilities and plant material.
- 7 Care should be taken around the existing oak trees, minimizing excavation around the roots.



CONCEPT SKETCH

**Plant List**

Legend	Key	N side	S side	total	Botanical Name	Common Name	Pot Size	Spacing/remarks
					<b>Heathers</b>			
[Symbol]				20	Erica carnea 'Springwood white'	Heather	#1	Dec-May
				20	Calluna vulgaris 'White Lawn'	Heather	#1	August/Sept
				20	Erica x darleyensis 'White Perfection'	Heather	#1	Early/mid winter
					<b>Groundcovers</b>			
	Auu	20	50	70	Arctostaphylos uva ursi	Kinnickinnick	10cm	
	Fc	101	95	196	Fragaria chiloensis	Beach Strawberry	10cm	
	La	8	13	21	Lavandula hidcote	Lavender	#1	.6 o.c.
	Mn	8	13	21	Mahonia nervosa	Oregon Grape	#1	
	Tp	20	50	70	Thymus pseudolanuginosus	Woolly Thyme	#1	
	Ts	20	50	70	Thymus serpyllum	Mother of Thyme	#1	
					<b>Ornamental Grasses</b>			
	Fr	8	13	21	Festuca roemerii	Roemers Fescue	#1	2' o.c.
	Hs	8	13	21	Helictotichon sempervirens	Blue Oat Grass	#1	2' o.c.
	Sc	8	13	21	Sesleria caerulea	Blue Moor Grass	#1	2' o.c.



PLANTING PLAN



NANAIMO OLD CITY ASSOCIATION  
c/o 106 Milton Street  
NANAIMO BC V9R 2K3

Drawn by: Victoria Drakeford  
Landscape Architect

PROJECT:  
FRANKLYN + MILTON PARKETTE  
Nanaimo BC.

SHEET:  
PLANTING PLAN

Date: July 9 2023  
Scale: 1:100m  
Drawn by: Victoria Drakeford  
Project # NOCAR3 Dwg# L1